

# EL PASO COUNTY SHERIFF'S OFFICE 2008 ANNUAL REPORT



**RICHARD WILES**  
**SHERIFF**

# **OUR MISSION STATEMENT**

**The El Paso County Sheriff's Office, as part of and empowered by the community, is committed to:**

- Protect lives, property, and the rights of people;**
- Maintain order;**
- Enforce the law impartially;**
- Provide quality police service in partnership with other members of the community.**

**To fulfill our mission, we will strive to attain the highest degree of ethical behavior and professional conduct at all times.**

# **OUR CORE VALUE**

**The El Paso County Sheriff's Office values the trust the public has given us and will honestly and ethically carry out our responsibilities. We will adhere to the Constitutions of the United States and the State of Texas in pursuit of community service. We will investigate and respond appropriately to all allegations of impropriety.**

# TABLE OF CONTENTS

A Message From Our Sheriff..... 2

Facts At A Glance..... 3

Command Staff ..... 4

Agency Demographics ..... 5

    Personnel .....5

    Organizational Chart.....7

    Budget.....8

Law Enforcement Statistics.....10

    Part One Offenses ..... 10

    Narcotics ..... 12

    Civil Process ..... 13

Detention Facilities .....14

    Downtown Detention Facility ..... 14

    Jail Annex ..... 15

Awards and Commendations .....16



*The only Sheriff's Office anywhere  
to receive the prestigious CALEA TRI-ARC Award*



# A MESSAGE FROM OUR SHERIFF

It is my pleasure to present the 2008 Annual Report for the El Paso County Sheriffs Office. The pages of this report provide a summary of some of the impressive accomplishments made by the men and women of this agency, both sworn and civilian. Many of these accomplishments were achieved with the assistance of outstanding citizens, other law enforcement agencies, and community groups.

It is particularly clear that 2008 was a transitional year. After the passing of Sheriff Leo Samaniego on December 28, 2007, Jimmy Apodaca was appointed Sheriff by the El Paso County Commissioners Court. This was the first change in administration of the El Paso County Sheriff's Office in 23 years. The evolution of this Office continues with my election as Sheriff in November 2008, and taking office on January 1, 2009.

The quality of employees' performance and work ethic in the El Paso County Sheriff's Office is exemplary. I have been more than impressed with the operations of the downtown detention facility and the jail annex. The field and investigative work by deputies is truly outstanding. And, all of these functions would not work so well without the assistance of the many civilians and volunteers helping bring it all together.

El Paso County is a diverse collection of vibrant cultures, and its citizens are the purpose behind the Sheriff's Office mission to uphold the law with a sense of pride and honor. I am privileged to lead such a talented group of men and women who represent our community's best qualities through their desire and commitment to serve with pride.



*Sheriff Richard Wiles*



*In January of 2008, the new El Paso County Sheriff's Office Headquarters building was completed. The building provided a modern, state-of-the-art facility that allows us to better serve our public.*



# FACTS AT A GLANCE

Total Population of El Paso County**	780,613
Population of El Paso County excluding City of El Paso**	135,975
Total Area of El Paso County	1,058 Square Miles
Rural Area of El Paso County	808 Square Miles
FY 2006-2007 Budget	\$83,771,698
Sworn Deputies (Actual)	253
Sworn Detention Officers (Actual)	619
Non-Sworn Civilian Staff (Actual)	186
Fleet (All vehicles)	297
Calls for Service (Non-administrative - SO Patrol Units Responded)	89,393
Average Daily Jail Population (All Facilities)	2,227
Total Inmates Booked	43,466

\*\* Source: City of El Paso Document "El Paso/Juarez Fact Sheet"

The El Paso County Sheriff's Office is organized into six Bureaus: four in law enforcement and two in detention.

The Law Enforcement Bureaus consist of:

- Patrol
- Criminal Investigations
- Special Operations
- Support Services

The Detention Services Bureaus consist of:

- Downtown Detention Facility
- Jail Annex.

The Law Enforcement Bureaus are responsible for all law enforcement activities including civil process, while the Detention Bureaus are responsible for our two jail facilities. Commissioned employees are offered two different career paths. Upon completion of the Basic Detention Officer's training, new hires are assigned to either the Downtown Detention Facility or the Jail Annex. After serving as a Detention Officer for a period of one year, the employee has the option of either staying in the detention career path, or applying for law enforcement. If selected, the employee attends Basic Peace Officer's training, and upon completion, enters service as a Deputy Sheriff assigned to one of three patrol stations. The Patrol Bureau provides primary law enforcement services to all unincorporated areas of El Paso County, and to the village of Vinton. In addition the Sheriff's Office provides law enforcement and investigative support to the towns of Socorro, Horizon City, Anthony, and Clint. Operations are also conducted within the City of El Paso.



# COMMAND STAFF



*Richard Wiles  
Sheriff*



*Sylvia Aguilar  
Chief Deputy*



*Bill Ellis  
Executive Administrative  
Officer*



*Paul Cross  
Commander  
Criminal Investigations*



*Frank Ortez  
Commander  
Patrol*



*Gomecindo Lopez  
Commander  
Special Operations*



*Michaela Hebeker  
Commander  
Jail Annex*



*Jesus "Eddie" Campa  
Commander  
Support Services*



*Wendy Wisneski  
Commander  
Downtown Detention*



# AGENCY DEMOGRAPHICS

## Personnel

### Total Sheriff's Office Employees

Category	Authorized Strength	Actual Strength	Number of New Hires	Number of Separations	Turnover Rate
Civilians	196	186	24	25	13.44%
Detention Officers	626	619	73	31	5.01%
Peace Officers	253	253	0	10	3.95%
<b>Total</b>	<b>1075</b>	<b>1058</b>	<b>97</b>	<b>66</b>	<b>6.24%</b>

### TCLEOSE Certification

Peace Officer	
Intermediate	16
Advanced	62
Master	118
Detention Officer	
Intermediate	127
Advanced	178
Master	45

### College Education

Peace Officer	
Associates Degree	11
Bachelors Degree	21
Masters Degree	8
Detention Officer	
Associates Degree	28
Bachelors Degree	30
Masters Degree	4

### Average Employee Age

Deputy Sheriff	41
Detention Officer	37
Non-contract Employee	45
Sheriff's Office Employee	39
Employees Eligible for Retirement	135



## 2008 Demographics of Employees In Support of Law Enforcement Only

Sworn Personnel	Males				Females			
	Caucasian	African American	Hispanic	Other	Caucasian	African American	Hispanic	Other
Entry level technician	81	28	588	5	6	3	86	1
Supervisory (Cpl/Sgt)	13	0	30	0	2	1	1	0
Command (Lt/Commander)	9	0	10	1	2	0	1	0
Executives (AC-above)	0	0	3	0	1	0	0	0
<b>Subtotal</b>	<b>103</b>	<b>28</b>	<b>631</b>	<b>6</b>	<b>11</b>	<b>4</b>	<b>88</b>	<b>1</b>
Non-Sworn Personnel	Males				Females			
	Caucasian	African American	Hispanic	Other	Caucasian	African American	Hispanic	Other
Clerical / Custodial	2	0	20	0	5	4	67	4
Supervisory / Technical	10	1	35	1	2	2	20	1
Managerial / Professional	1	0	3	0	2	0	1	0
Executive	1	0	2	0	0	0	2	0
<b>Subtotal</b>	<b>14</b>	<b>1</b>	<b>60</b>	<b>1</b>	<b>9</b>	<b>6</b>	<b>90</b>	<b>5</b>
<b>TOTAL</b>	<b>117</b>	<b>29</b>	<b>691</b>	<b>7</b>	<b>20</b>	<b>10</b>	<b>178</b>	<b>6</b>

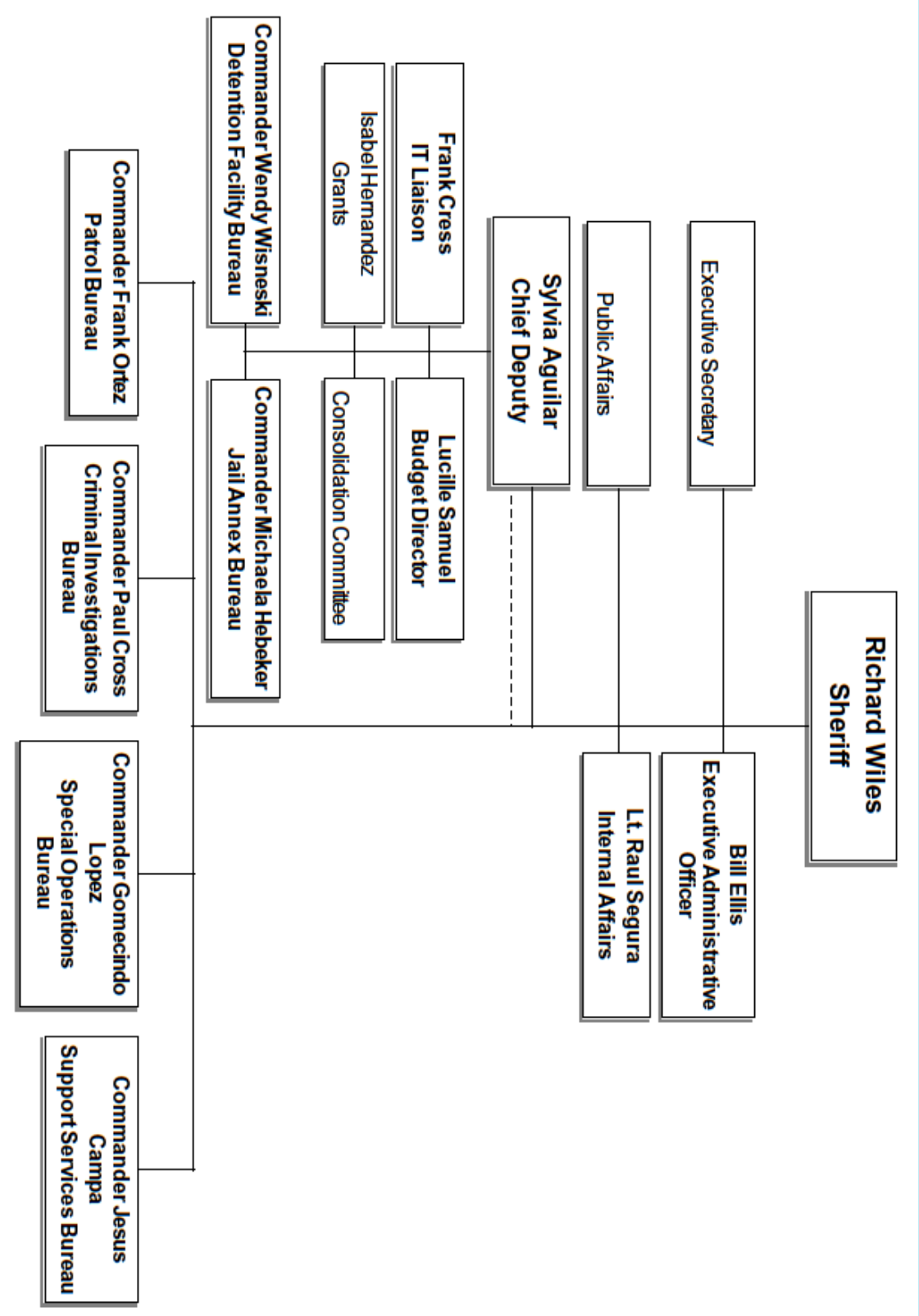
### Comparison of Sworn Personnel to Population Served

	Caucasian	African-American	Hispanic	Other
Census Data for Area Served	14.16%	2.75%	81.28%	1.8%
Sheriff's Office Sworn Personnel	12.95%	3.69%	82.14%	1.23%





# Organizational Chart



# Budget

## Fiscal Budget 2007/2008 (Amended)

Description	Courthouse	Law Enforcement	Detention Facility	Jail Annex	Totals
Salaries	\$537,290	\$15,312,483	\$17,475,532	\$15,159,347	\$48,484,652
Fringe Benefits	\$189,856	\$6,629,542	\$7,562,078	\$7,054,780	\$21,436,256
Operating Expenses	\$26,000	\$2,292,456	\$5,398,372	\$6,092,984	\$13,809,812
Equipment Under \$5,000	\$0	\$0	\$0	\$0	\$0
Renovations	\$0	\$0	\$0	\$0	\$0
Vehicles	\$0	\$0	\$0	\$0	\$0
Equipment	\$0	\$9,891	\$7,451	\$23,627	\$40,969
<b>Total</b>	<b>\$753,146</b>	<b>\$24,244,372</b>	<b>\$30,443,433</b>	<b>\$28,330,738</b>	<b>\$83,771,689</b>

### Fiscal Budget Trends (Amended) 2001-2008

Year	Total Budget	% Change
2001	\$45,799,489	N/A
2002	\$52,991,489	15.70%
2003	\$59,726,132	12.71%
2004	\$63,884,173	6.96%
2005	\$70,104,843	9.74%
2006	\$70,984,496	1.25%
2007	\$76,798,195	8.19%
2008	\$83,771,689	9.08%

### Fiscal Budget 2007/2008 Revenues

Description	Amount
Bail Bond Permits	\$6,000
SCAAP	869,231
County Sheriff's Fees	291,150
Incentive Payments Social Sec	29,400
Federal Prisoner	12,819,784
Prisoner Maintenance City	3,529,725
Extradition Prison	2,200
Weekender Prisoner (SelfPay)	5,538
Stale Dated Checks	51
NSF Check Fees	150
Interest Earnings N.O.W.	28,894
Reimbursements-Inmate Transport	46,540
Reimbursements Medical	63
Reimbursements Prior Year	921
Reimbursements - Salaries	30,969
Reimbursements EPCC	10,000
Unclassified Revenues	5,218
Inmate Phone Commissions	695,112
Reimbursements Licenses EPISD	20,000
Commissary	641,623
Sheriff Food Concessions	259
Commissary Interest	9,002
<b>Total</b>	<b>\$19,041,829</b>



## Grants Received 2007/2008 Fiscal Budget

Grant	Award	Match	Total
Homeland Security	\$156,584.00		\$156,584.79
HIDTA Administration			\$583,185.00
HIDTA Anti-Smuggling			\$530,193.00
HIDTA Enterprise Money Laundering			\$334,168.00
HIDTA Fugitive Task Force			\$210,624.00
HIDTA Intelligence Support Center			\$792,699.00
HIDTA Multi-Agency Task Force			\$419,121.00
HIDTA Stash House			\$122,077.00
HIDTA Training			\$62,282.00
HIDTA Trans/Hijack Task Force			\$207,688.00
Major Drug Trafficking Organization			\$200,000.00
Domestic Highway Enforcement- Intelligence			\$43,800.00
Domestic Highway Enforcement-Transport			\$20,000.00
Metro Narcotics (4/1/06 to 3/31/07)	\$2,067,520.00		\$2,067,520.00
Metro Narcotics (4/1/07 to 9/30/07)	\$1,033,769.00		\$1,033,769.00
Justice Assistance Program 2007 (50% County of El Paso & 50% City of El Paso)	\$366,087.00		\$366,087.00
Law Enforcement Officer Standards Education	\$63,554.90		\$63,554.90
Operation Wrangler	\$236,146.41		\$236,146.41
Paso Del Norte Health Foundation Grant	\$6,000.00		\$6,000.00
State Operation Linebacker	\$365,120.00		\$365,120.00
Federal Operation Linebacker	\$550,594.00		\$550,594.00
Region VIII Training Academy	\$216,668.00		\$216,668.00
Texas Comptroller Tobacco Compliance	\$20,000.00		\$20,000.00
Victim Coordinator Liaison Grant (Texas Office of the Attorney General )	\$39,000.00		\$39,000.00
<b>Victim of Crime Act (TX Office of the Governor- Criminal Justice Division)</b>	<b>\$38,098.00</b>	<b>\$11,648.00</b>	<b>\$49,746.00</b>
<b>TOTAL</b>	<b>\$5,159,142</b>	<b>\$11,648.00</b>	<b>\$8,696,627</b>



# LAW ENFORCEMENT STATISTICS

## Part One Offenses

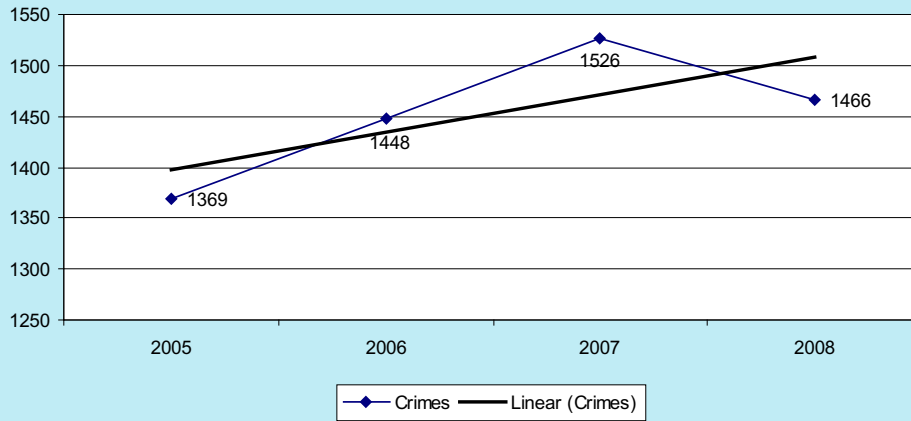
OFFENSE	TOTALS		CASES CLEARED	
	2007	2008	2007	2008
MURDER	3	2	1	2
SEXUAL ASSAULT	18	26	10	11
ROBBERY	29	32	11	16
AGGRAVATED ASSAULT	173	162	115	99
BURGLARY	362	294	54	37
LARCENY (THEFT)	807	735	101	97
VEHICLE THEFT	113	192	33	27
ARSON	21	22	5	5

## Clearance Rate For Part One Offenses

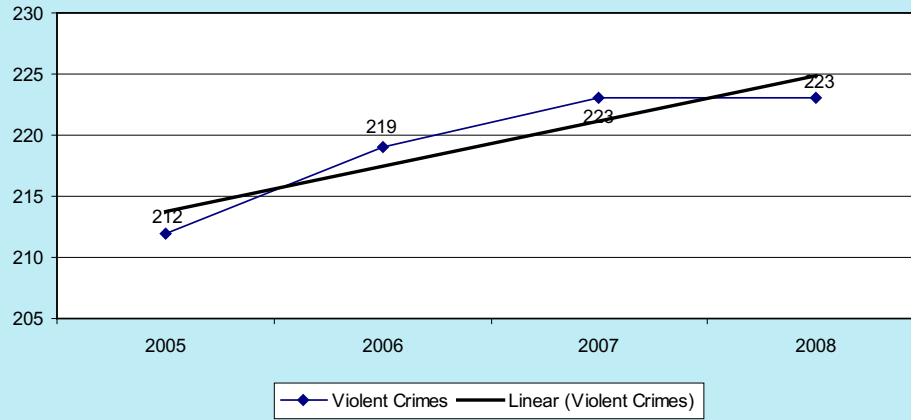
OFFENSE	2007	2008	2007 NATIONAL UCR CLEARANCE RATE ( All Agencies)	2007 NATIONAL UCR CLEARANCE RATE (Metropolitan Counties)
MURDER	33.3%	100.0%	61.2%	60.7%
SEXUAL ASSAULT	55.6%	42.3%	40.0%	43.5%
ROBBERY	37.9%	50.0%	25.9%	27.5%
AGGRAVATED ASSAULT	66.5%	61.1%	54.1%	58.4%
BURGLARY	14.9%	12.6%	12.0%	13.3%
LARCENY (THEFT)	12.5%	13.2%	12.4%	17.5%
VEHICLE THEFT	29.2%	14.1%	18.6%	15.1%
ARSON	23.8%	22.7%	39.6%	17.9%



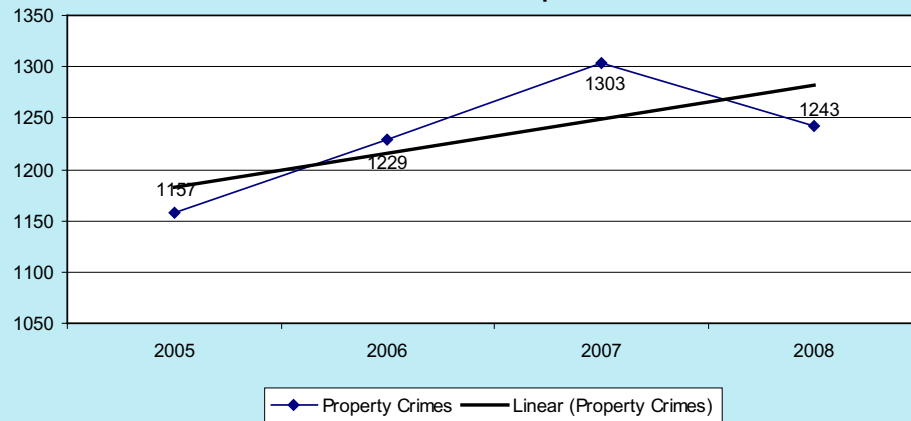
**Part I Crimes  
A Five Year Comparison**



**Part I Violent Crimes  
A Five Year Comparison**



**Part I Property Crimes  
A Five Year Comparison**



# Narcotics

Most of the narcotics related offenses are handled by the Special Operations Division, an investigative unit that targets street level narcotics sales, drug trafficking organizations and other types of financial crimes related to illicit drugs. As of April 1, 2006, new grant requirements expanded the role of the Special Operations Division to include criminal gang activity, human trafficking and organized criminal activity. The division is comprised of two investigative task forces funded by two government agencies. The first task force is the El Paso County Metro Criminal Enterprise Unit funded by the State of Texas Governor's Criminal Justice Division. The second task force is composed of five separate initiatives under the West Texas HIDTA and funded by the Office of the National Drug Control Program.



## 2008 Drug Seizures by El Paso County Sheriff's Office

Agency Seizures	
Marijuana (lbs.)	11,443.83
Cocaine (kg)	10.98
Heroin (gr)	63.74
Methamphetamine (gr)	28.3
Depressants (gr)	3.15
Hallucinogens (gr)	74.7

In addition, Sheriff's Office personnel seized \$556,445.00 in currency, thirty-eight personal vehicles, three tractor/trailer combinations, one RV, and two electronics items pending asset forfeiture proceedings.

Sheriff's Office personnel assigned to various task forces assisted other agencies in seizing the following items during 2008.

Assisted Seizures	
Marijuana (lbs.)	24,940
Cocaine (kg)	10,029.41
Heroin (gr)	6.9
Methamphetamine (gr)	11.8

In addition, Sheriff's Office personnel assigned to various task forces assisted in the seizure of \$2,209,144.00 in currency and property.



## Civil Process

NOTE: All fees for process of documents received for the Local Citation Unit and Subpoena Unit are paid directly at the District Clerk's office or County Clerk's office. The monies are then credited by the District Clerk's or County Clerk's office to the "Sheriff's Fees" Account.

### Local Citation Unit

The Local Citation Unit is responsible for processing civil citations and other court orders. These citations and orders are generated from district and county courts within El Paso County. This unit also handles civil process for cases [i.e. child support, law suits, and other civil litigation orders] pending in El Paso County courts.

	FY-2007	FY-2008	% Change
Citations/legal documents Received:	14,228	12,213	-14%
Citations/legal documents served:	9,152	8,815	-4%
Citations/legal documents not served:	906	775	-14%
Civil Process service fees collected:	\$928,274.00	\$766,116.00	-17%

### Foreign Citation Unit

The Foreign Citation Unit is responsible for processing civil citations and court orders that are generated from other county jurisdictions or states.

	FY-2007	FY-2008	% Change
Citations/legal documents received:	1,169	1,207	3%
Citations/legal documents served:	679	787	16%
Citations/legal documents not served:	238	204	-14%
Civil process service fees collected:	\$95,560.00	\$95,560.00	0%

### Execution Unit

The Civil Execution Unit is responsible for enforcing civil court orders to seize real and personal property and execute civil writs of attachment [i.e. evictions of persons from disputed property, and taking custody of child to the designed party on the writ]. This unit also conducts public auctions on real and personal property to satisfy court judgments.

	FY-2007	FY-2008	% Change
Writs received:	959	887	-8%
Writs served:	582	623	7%
Writs not served:	246	258	5%
Civil process service fees collected:	\$158,130.00	\$131,208.77	-17%

### Subpoena Unit

The Subpoena unit is responsible for processing subpoenas for scheduled court trials. Deputies in this unit are tasked to serve subpoenas, civil citations, and other court orders not requiring the seizure of real or personal property.

	FY-2007	FY-2008	% Change
Subpoenas/citations received:	22,276	19,907	-11%
Subpoenas/citations served:	14,594	11,897	-18%
Subpoenas/citations not served:	6,740	6,851	2%
Civil process service fees collected:	\$4,600	\$2,600	-43%



# DETENTION FACILITIES

## Downtown Detention Facility

The Downtown Detention Facility is located at 601 E. Overland across the street from federal courts, state district and county courts, Justice of the Peace court, and city municipal courts. The facility has over 310,440 square feet and a housing capacity of 1000 inmates. This facility has nine housing floors, three of which are designated for female housing. This facility also houses a Jail Magistrate Court, the Sheriff's Office Warrant Section, Jail Ministry Section, Bond Inmate and Trust Section, and liaison offices for the U.S. Border Patrol and Adult Probation.



Downtown Detention Facility Demographics	2007	2008	% Change
Individuals Booked	43,833	43,466	-1%
Individuals Classified	35,411	35,089	-1%
Releases from Facility	35,382	34,944	-1%
Daily Average Population	876	878	0.23%
Meals Served	1,173,421	1,225,197	4.4%
Avg. Food Cost per Plate	\$0.68	\$0.65	-4.4%

*All state inmates housed in our facility are classified according to their current offense or conviction, offense history; escape history, institutional disciplinary history, prior convictions, alcohol and or drug abuse and stability factors. Seven different custody classifications are used to classify each inmate based on their initial interview.*

Downtown Detention Facility Inmate Escorts	2007	2007	% Change
Official Proceedings:	23,271	25,174	+8%
Medical Referrals:	860	936	+9%
Emergency Room Transports:	86	99	+14%
Total Inmate Escorts:	24,217	26,209	+8%





# Jail Annex

The El Paso County Jail Annex was opened as part of the Leo Samaniego Law Enforcement Complex. The Jail Annex is of podular/modular design. As such it contains twelve “pods.” Each pod consists of cells surrounding a central control/guard station. A series of four pods comprise a module/unit. There are currently three modules/units, however there is space on-site for expansion. In an effort to reduce the likelihood of confrontations between inmates, the facility is designed to minimize inmate movement. Most services are taken to the inmate, including; educational programs, ministry programs, distribution of prescribed medicines, commissary, meals, laundry, and general reading material. Centralized services include the medical clinic and law library.



The rated capacity is 1,450. The security/custody level is rated at maximum. A staff of 336 personnel are assigned to the Annex. The Annex is also responsible for the transportation of inmates between facilities, as well as the Texas Department of Correction (TDC) and other correctional facilities within the state.

Jail Annex Demographics	2007	2008	% Change
Daily Average Population:	1,338	1,349	0.8%
Number of Meals Served	1,648,354	1,657,424	0.55%
Average Cost Per Meal	\$.49	\$.60	22.45%

Jail Annex Transportation Runs	2007	2008	% Change
Inmates transported to court	35,472	28,426	-19.86%
Mental Inmates transported to facilities	38	40	5.26%
Inmates transported to TDC	333	324	-2.70%
Inmates transported to medical appointments-	1,771	1,373	-22.47%
Inmates transferred from Downtown to Annex	8,236	7,871	-4.43%



# AWARDS AND COMMENDATIONS

## Medal of Valor

Julio Gonzalez - Deputy  
Enrique Lugo - Deputy

## Lifesaving

Fernando Medina -  
Detention Officer  
Michael Acosta -  
Detention Officer  
Juan Munoz - Deputy

## Purple Heart

Antonio Leyba - Corporal  
Eugene Nunez - Detention Officer  
Ricardo Perales - Deputy

## Sheriff's Citation

Steven Ward - Sergeant  
Jesus Chavez - Deputy  
Carlos Azcarate - Deputy  
Jose L. Hernandez - Deputy  
Jose Kluge - Deputy  
George Johnson - Deputy  
Hilario Calanche - Deputy

## Commendation

Edward Sustaita -  
Detention Officer  
Antonio Leyba - Corporal  
Juan Ordonez - Detention Officer  
James Stokes - Corporal

## Academic Commendation

Guillermo Ramirez -  
Detention Officer  
Robert Lazcano -  
Detention Officer  
Andre R. Wright -  
Detention Officer  
Sergio A. Juarez - Deputy  
Aaron Nevarez - Detention Officer  
Edward Ortega  
(Top Gun - Firearms) - Deputy  
Jose Aguilera (Physical  
Fitness) - Deputy

## Employee of the Quarter Commendation

Blanca Enriquez - DDF -  
Civilian of the Qtr - 1st  
Vanessa Garcia - DDF -  
Detention Officer  
Renee Howell - DDF -  
Civilian of the Qtr - 2nd

Cesar Quinonez - DDF -  
Detention Officer  
Edward Bell - Annex -  
Detention Officer - 1st  
Cesar Quinonez - DDF -  
Detention Officer  
Daria Woods - DDF - Civilian  
of the Qtr - 3rd  
Jacob Billstone - DDF -  
Detention Officer - 4th  
Olga Lopez - DDF - Civilian  
of the Qtr - 4th  
EdRicardo Gandara - Annex  
- Detention Officer - 3rd  
Cesar Quinonez - Annex -  
Civilian of the Qtr - 3rd  
Anthony Rollins - Deputy - CID  
Richard Pineda - Detective - CID  
Mary Lou Almonte - Civilian - CID  
Stephen Baxter - Annex -  
Detention Officer 2nd  
Monica Narcizo - Annex -  
Civilian of the Qtr - 4th

## Certificate of Appreciation

Daniel Martinez - Detention Officer  
Manuel Marquez - Detention Officer  
Peter Nadeau - Detention Officer  
Ruben Flores - Detention Officer  
Rick Glancey - PIO  
Daniel Haggerty - Commissioner  
Anthony Cobos - Judge  
Miguel Terarn - Commissioner  
Veronica Escobar - Commissioner  
Luis Sarinana - Commissioner  
Eddie Reyes - Tornillo High School  
Lorena Tavera - Miss El Paso  
Stephanie Valle - KVIA  
Joseph T Kinard - FBI - Assistant  
Special Agent in Charge  
Raul Balderas - Lt. Assessment  
Manion Long - Lt. Assessment  
Robert Scott - Lt. Assessment  
Russel Turner - Deputy  
Lt. Assessment  
Mike Siefert - Deputy Lt. Assessment  
Robert Scott - Deputy  
Lt. Assessment  
Juan Ruiz - Detention Officer  
Marcela Gil - Detective  
Miguel Aveytia - FCO Assessment

Anthony Eberwine - FCO  
Assessment  
James Martinez - FCO Assessment  
Grace Mukai - Detective  
Assessment  
Brian McElhenny - Detective  
Assessment  
Greg Garcia - Detective  
Assessment  
Anthony Cobos - Judge  
Luis Sarinana - Commissioner  
Veronica Escobar - Commissioner  
Miguel Teran - Commissioner  
Daniel Haggerty - Commissioner  
Piti Vasquez - Purchasing  
Joe Lopez - Purchasing  
Mike Garcia - Civil Service  
Commission  
Dr. Gene Finke - Civil  
Service Commission  
Irene Ramirez - Civil  
Service Commission  
Edward Dion - Auditors  
Wallace Hardgrove - Auditors  
Ray Gilbert - Awards &  
Recognitions Member  
Irma Padilla - Budget  
Chris Pacheco - Lawyer  
Dolores Messick - Chief Deputy  
Gilbert Pinon - Assistant Chief  
Claudio Morales - Assistant Chief  
Angel Colorado - Commander  
Al Hernandez - Commander  
Lawrence Guerra - Commander  
Clint Porter - Commander  
Jack Waite - Acting Commander  
Jose A. Chairez - Acting  
Commander  
Lucy Moreno - Clerk  
Lorenzo Ortiz - Motor  
Pool Mechanic  
Mario Davalos - Motor  
Pool Mechanic  
Terry Huhn - Motor Pool Mechanic  
Pete Duran - Motor Pool Mechanic  
Joe Arellano - Motor Pool Mechanic  
Joe Arispe - Motor Pool Mechanic  
Vincent Pkluda - Training Director  
Anthony Almeida - Deputy  
Barry Kell - Guardian Tactical



**This document was prepared by  
the El Paso County Sheriff's Office  
Crime Analysis Unit**

**For more about the Sheriff's Office  
please contact us at:**

**EL PASO COUNTY SHERIFF'S OFFICE  
P. O. BOX 125  
EL PASO, TEXAS 79941-0125  
(915) 538-2217**

**Or visit us on the web at:**

**[EPCOUNTY.COM/SHERIFF](http://EPCOUNTY.COM/SHERIFF)**



*We Serve With Pride*



**THE ONLY SHERIFF'S OFFICE ANYWHERE  
TO RECEIVE THE PRESTIGIOUS  
CALEA TRI-ARC AWARD**